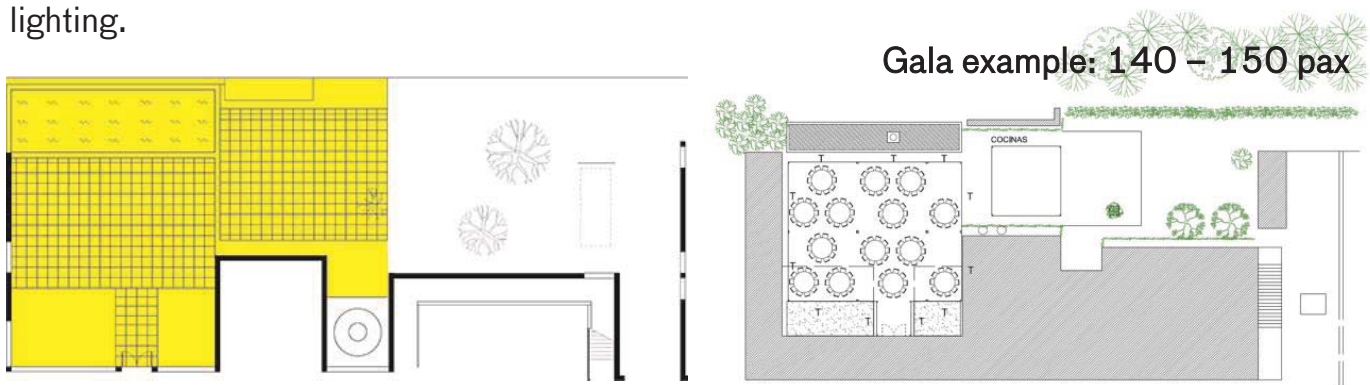


North Patio

The **North Patio** is an exceptional balcony over Barcelona that enjoys one of the most privileged views of the city. Surrounded by rationalist architecture by Sert and Joan Miró work, is one of the most welcoming spaces of the Fundació, for holding a small cocktail or organizing big events.

Located at ground floor level, orientation north, and rectangular, has an skylight surrounded, on three sides, by the facades of the museum, in white concrete formwork and tiling in large sink tile color sapphire 7-9 mm thick, soft baked floor. Chaired by a pond that surrounds the *Moon, sun and one star* Miró's sculpture (1968).

From April to November all events are covered with a high Haima tent, with or without decorative lighting, which completes the scene of any event and protects against heat and possible rain. In addition, the space can be set with stage, plasmas, furniture and stage lighting.



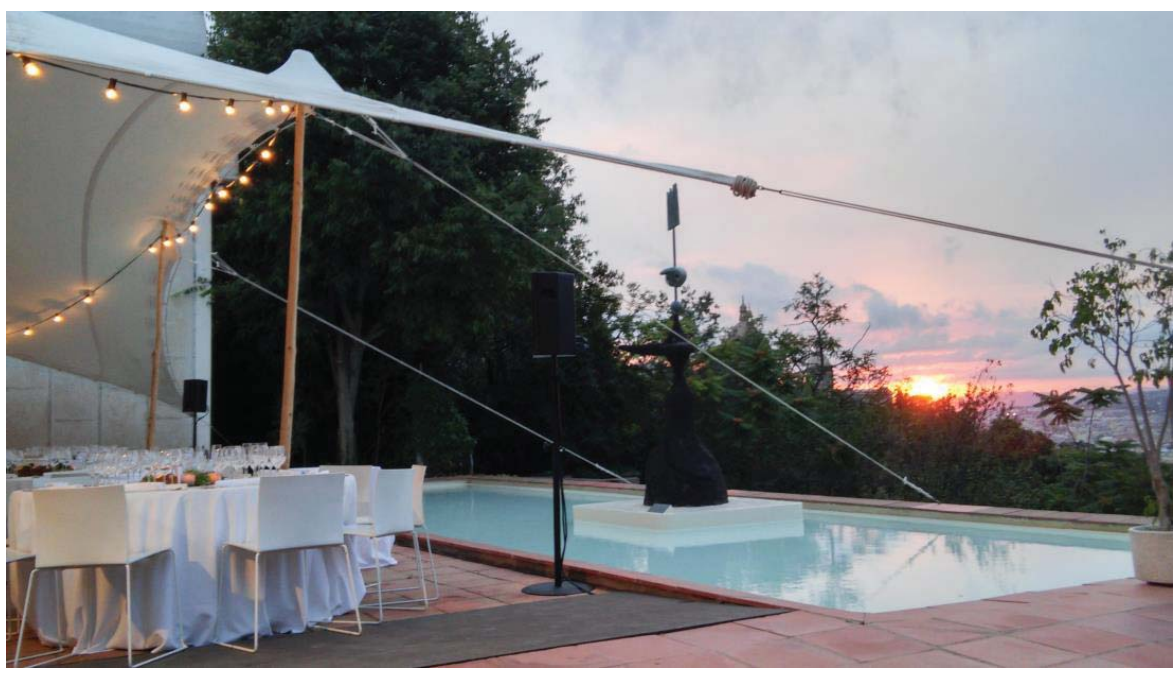
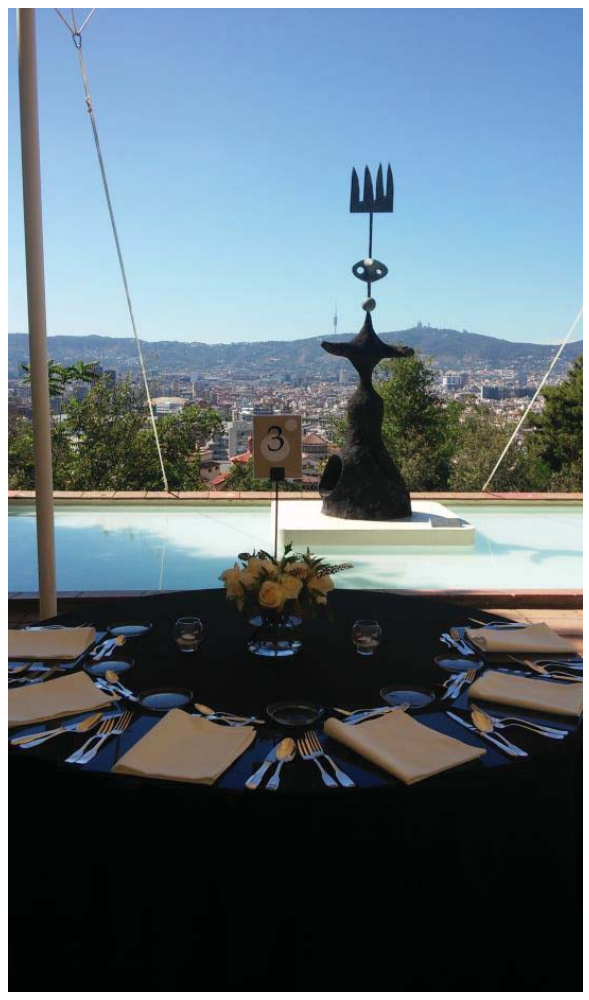
TENT	270	180	-	225 + 150	From 09:00 to 24:00
------	-----	-----	---	-----------	---------------------

Equipment:

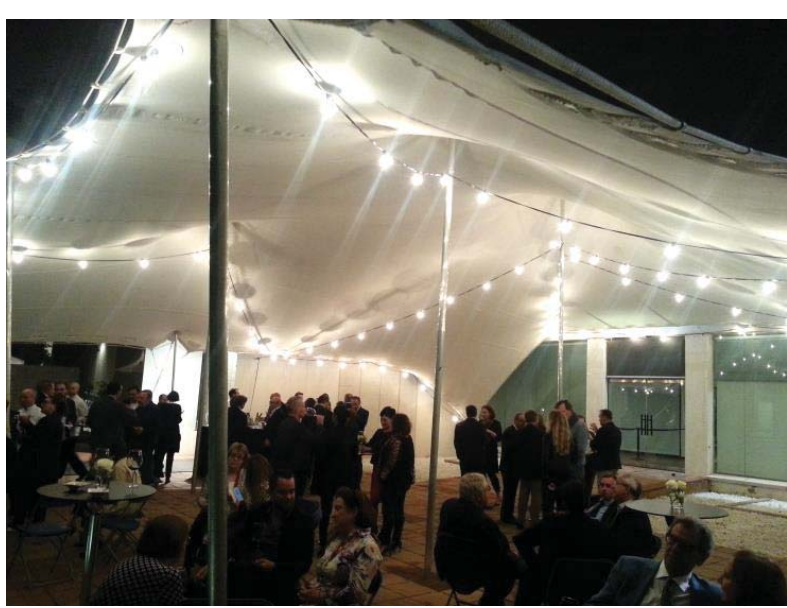
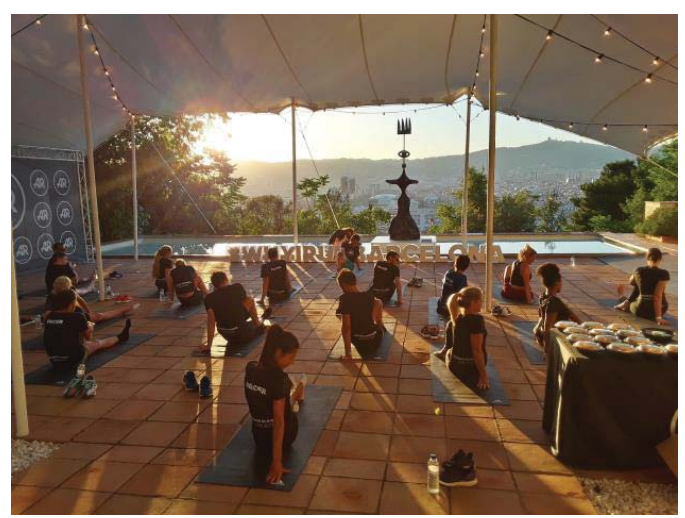
- **WIFI.** 100MB download and upload speed
- **Lighting.** Outdoor lighting of 25 lux. (Basic lighting to reinforce at sunset-night events)
- **Water supply:** flow 0,6l/s
- **Switchboards:** Two, 8Kw and 32Kw
- **Office tent for catering:** 4 x 4 meters
- **Platforms to cover the sides and extend the space** (extra cost)

Fundació Joan Miró ✱ Barcelona

North Patio. Haima Tent (April-November)



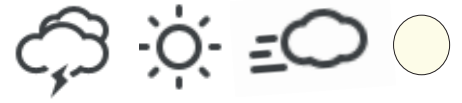
North Patio. Haima Tent (April-November)



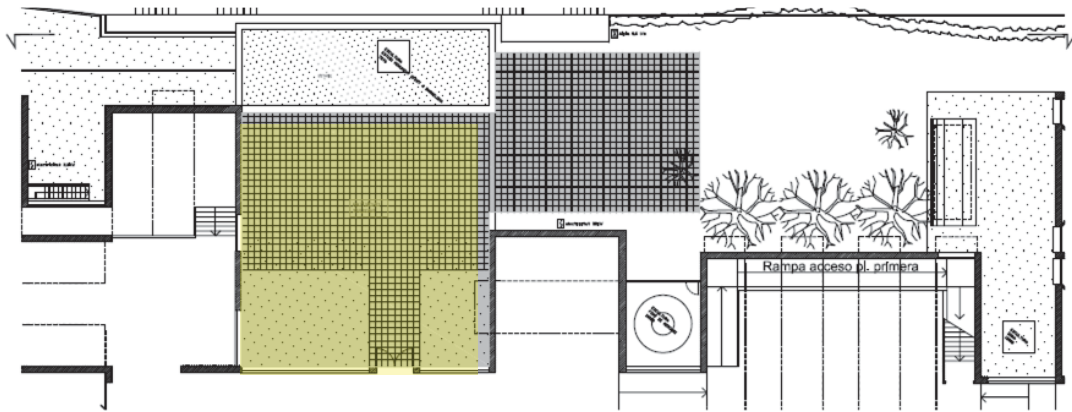
North Patio. Wood tent (Desember – March)



Haima Tent (April-November)



MEASURES DESCRIPTION	15x16 m. Step height: 6 m highest point It covers all the area of North Patio. There is the possibility of illuminate the tent with floodlighting or garlands. Sides can be covered
---------------------------------------	--



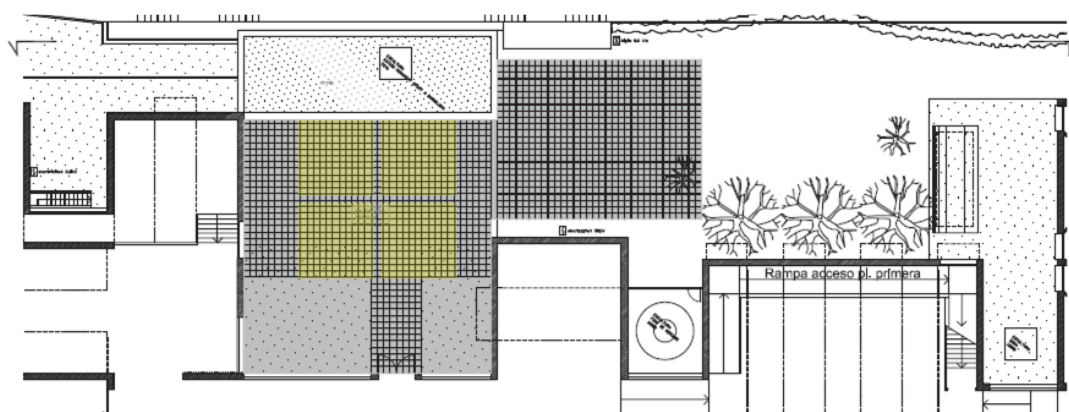
Haima side covering



Wood Tent (Desember – March)



MEASURES DESCRIPTION	5 x 5 m modules. Step height: from 2,30 m to 2,40 m Structure's height: from 3,50 m from 3,60 m. It allows to put the number of modules according to needs. Possibility of lighting the tent and side closure
---------------------------------	--



Haima Lateral Tent (Optional)



MEASURES DESCRIPTION	10 x 6 m. Step height: m highest point It covers the lateral area of North Patio. There is the possibility of illuminate the tent with floodlighting or garlands. Sides can be covered
---------------------------------------	---

